

# TENNIS

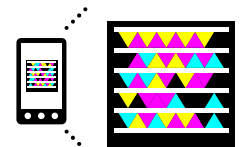
## REGISTRATION TIMELINE

Key	
FPD	Flyer Post Date
PE	Pre-Enrollment (Tennis Members Only)
OE	Open Enrollment (All PRO Sports Club Members)

YOUTH PROGRAMS											
SEASON	SESSION MONTHS (approximate)	FPD	PE	OE	FPD	PE	OE	FPD	PE	OE	
<b>REGULAR MONTHLY PROGRAMS:</b>											
Advanced Junior Training, Rush & Crush, Junior Socials											
WINTER	January/February	Dec. 1	Dec. 1-15	Dec. 16							
SPRING	March/April	Feb. 1	Feb. 1-15	Feb. 16							
LATE SPRING	May/June	Apr. 1	Apr. 1-15	Apr. 16							
SUMMER	July/August	Jun. 1	Jun. 1-15	Jun. 16							
FALL	September/October	Aug. 1	Aug. 1-15	Aug. 16							
LATE FALL	November/December	Oct. 1	Oct. 1-15	Oct. 16							
<b>AFTER-SCHOOL PROGRAMS:</b>											
WINTER	January-February				Dec. 1	Dec. 1-15	Dec. 16				
SPRING	March-April				Feb. 1	Feb. 1-15	Feb. 16				
LATE SPRING	May-June				Apr. 1	Apr. 1-15	Apr. 16				
FALL	September-October				Aug. 1	Aug. 1-15	Aug. 16				
LATE FALL	November-December				Oct. 1	Oct. 1-15	Oct. 16				
<b>JUNIOR WEEKEND PROGRAMS:</b>											
WINTER	January-March							Dec. 1	Dec. 1-15	Dec. 16	
SPRING	April-June							Feb. 1	Feb. 1-15	Feb. 16	
SUMMER	June-August							Apr. 1	Apr. 1-15	Apr. 16	
SUMMER	July-August				Jun. 1	Jun. 1-15	Jun. 16				
FALL	September-December							Aug. 1	Aug. 1-15	Aug. 16	
<b>SUMMER PROGRAMS:</b>											
SUMMER	June-August							Dec. 1	Dec. 1-15	Dec. 16	

ADULT PROGRAMS											
SEASON	SESSION MONTHS (approximate)	FPD	PE	OE	FPD	PE	OE	FPD	PE	OE	
<b>REGULAR MONTHLY PROGRAMS:</b>											
Advanced Beginner Tennis, Evening Tennis, Lunch Time Tennis, Saturday Ladies Doubles, Tennis Socials											
WINTER	January/February	Dec. 1	Dec. 1-15	Dec. 16							
SPRING	March/April	Feb. 1	Feb. 1-15	Feb. 16							
LATE SPRING	May/June	Apr. 1	Apr. 1-15	Apr. 16							
SUMMER	July/August	Jun. 1	Jun. 1-15	Jun. 16							
FALL	September/October	Aug. 1	Aug. 1-15	Aug. 16							
LATE FALL	November/December	Oct. 1	Oct. 1-15	Oct. 16							
<b>CO-ED FUN DOUBLES FLIGHTS; DRILLS &amp; STRATEGIES; LADIES FLIGHTS; LADIES PLAY INSTRUCTS</b>											
WINTER	January-March							Dec. 1	Dec. 1-15	N/A	
SPRING	April-June							Feb. 1	Feb. 1-15	N/A	
SUMMER	June-August							Apr. 1	Apr. 1-15	N/A	
SUMMER	July-August				Jun. 1	Jun. 1-15	N/A				
FALL	September-December							Aug. 1	Aug. 1-15	N/A	

For more information, please contact the Tennis Department at (425) 861-6230.



Get the free mobile app at <http://gettag.mobi>